

6.0

Luna Imaging Inc.

LUNA

LUNA 6.0
Installing a
Subscription Media
Collection to LUNA

Luna Imaging Inc.

LUNA

This document contains information proprietary to Luna Imaging, Incorporated (Luna). This document is provided to you as part of the Luna Imaging, Inc. licensed software and is governed under the same licensing restrictions that apply to that license. You may reproduce this documentation, which contains Luna Imaging, Inc. proprietary information for use within your organization. You may not disclose or distribute this documentation to third parties.

Even though Luna has tested the hardware and software and reviewed the documentation, Luna makes no warranty or representation, either express or implied, with respect to the hardware, software, or documentation, their quality, performance, merchantability, or fitness for a particular purpose. Luna has made every effort to keep the information in this manual current and accurate as of the date of publication or revision. However, Luna does not guarantee or imply that this document is error free or accurate with regard to any particular specification.

In no event will Luna be liable for direct, indirect, special, incidental, or consequential damages resulting from any defect in the hardware, software, or documentation, even if advised of the possibility of such damages. In particular, Luna shall have no liability for any programs or data stored in or used with Luna products, including the costs of recovering such programs or data.

No Luna agent, dealer, or employee is authorized to make any modification, extension, or addition to the above statements.

All copyrights and trademarks belong to their respective holders. Insight and Inscribe are registered trademarks of Luna Imaging Inc.

©2008 luna imaging, inc.
2702 Media Center Drive
los angeles, california 90065
phone 800.452.LUNA (4562) • fax .323.221.2846

Introduction

This Document will take you through the steps of adding a subscription Media Collection into a LUNA server.

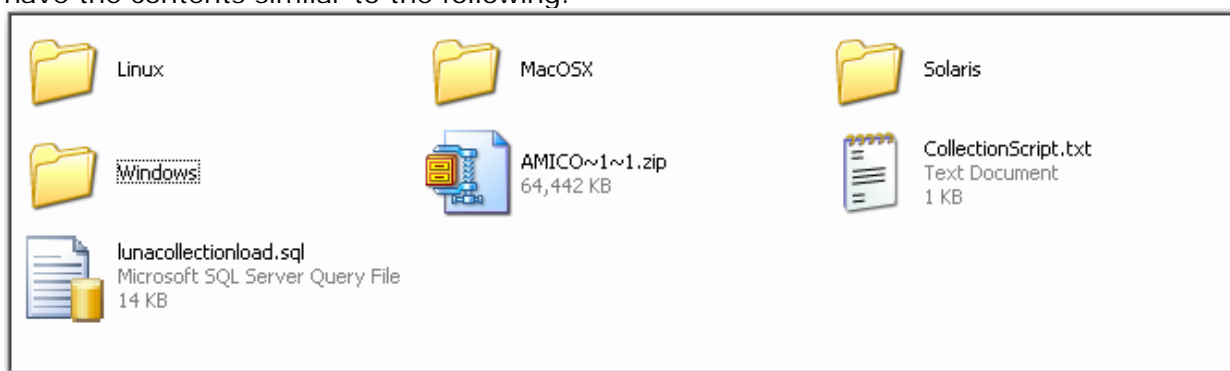
Once installed, the Media Collection will appear as an institutional collection to the end users and will work in conjunction with your existing collections.

Requirements

- Write access to the collection_indexes folder of your LUNA install
- Enough space for the Collection Index (AMICA requires about 600mb)
- Connection and write access to your LUNA database (if you have Administrator Tools access, you're set)
- Access to the Merge and Load function in the LUNA Publisher. This privilege is available to users who can access Insight Studio's User Management features.
- A User Group and Code Key for the subscription collection you are loading

Running the Installer

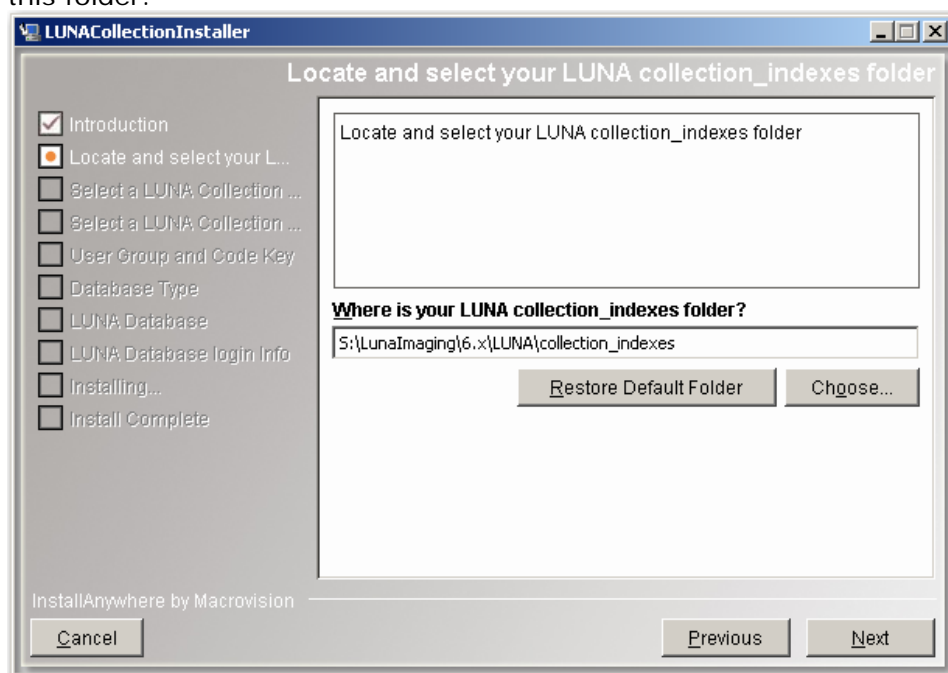
Once you have downloaded your subscription zip file and unzipped the archive, you should have the contents similar to the following:



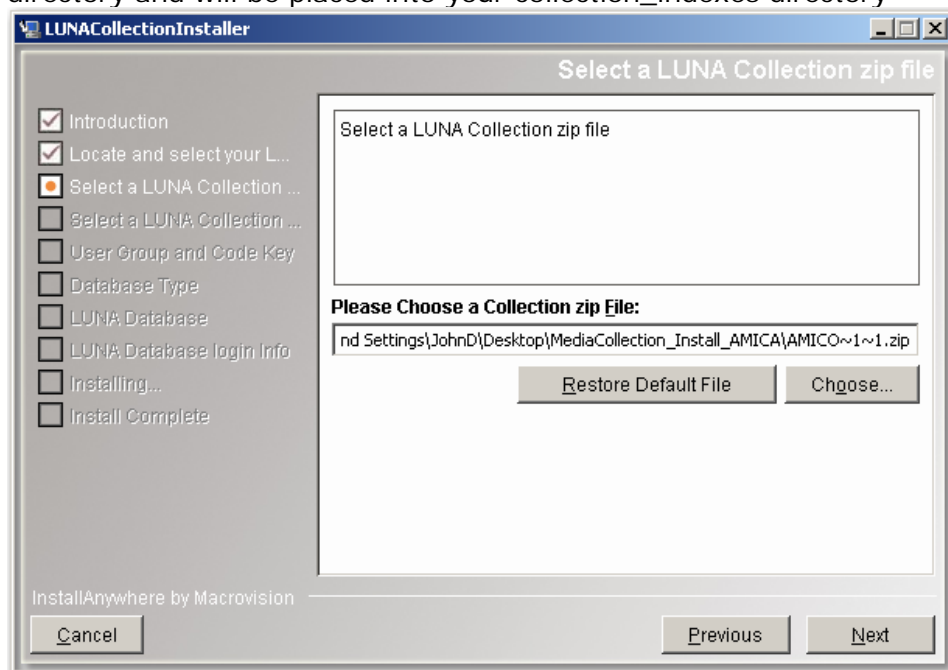
You can locate the appropriate LunaCollectionInstaller for your system in one of the subfolders.

Launch the installer and follow the instructions listed below.

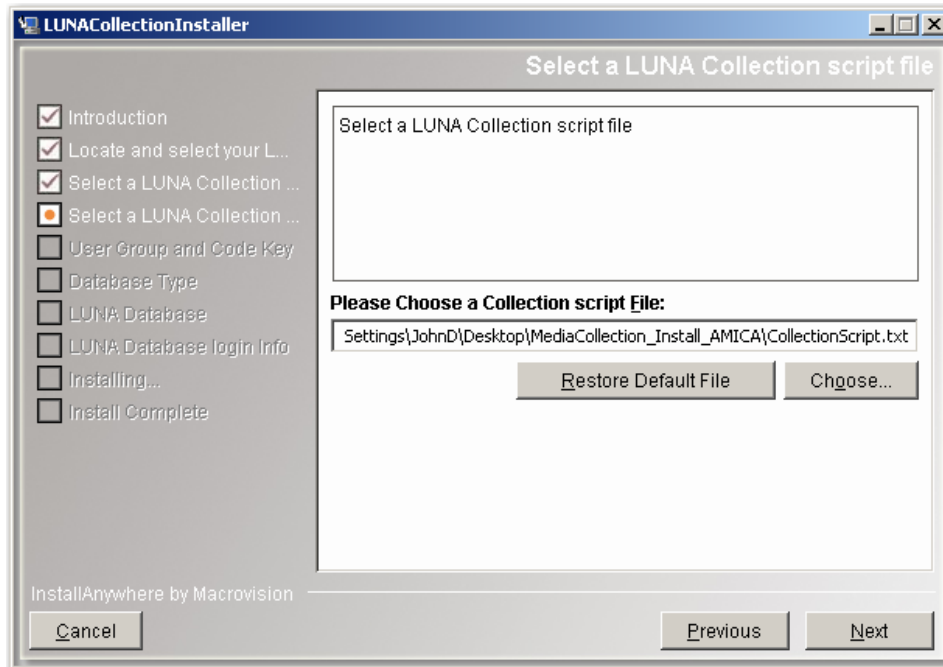
Locate your collection_indexes folder. This will most likely be located in the installation directory of LUNA. The collection index for your subscription collection will be placed into this folder.



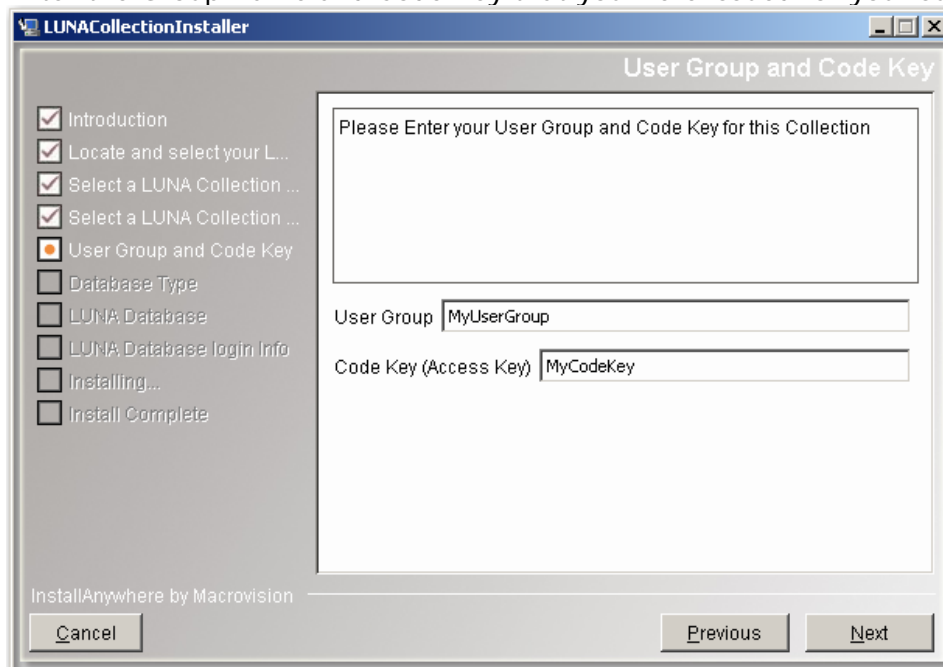
Locate the Collection zip file for your subscription collection. This is a zip of the index directory and will be placed into your collection_indexes directory



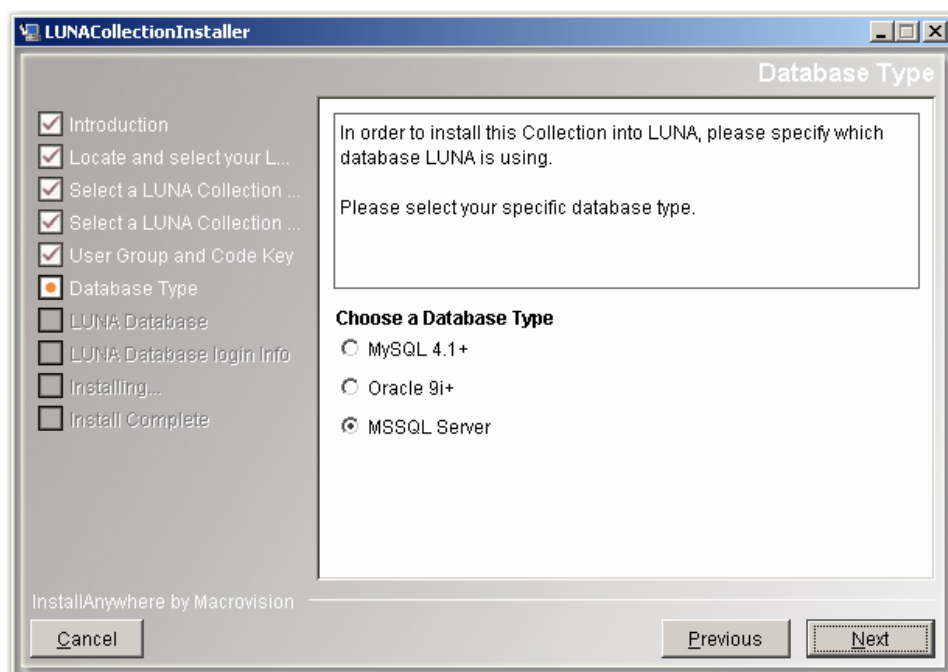
Locate the CollectionsScript.txt file. This is used to test if the media collection already exists in the LUNA database.



Enter the Group Name and Code Key that you were issued for your subscription collection.

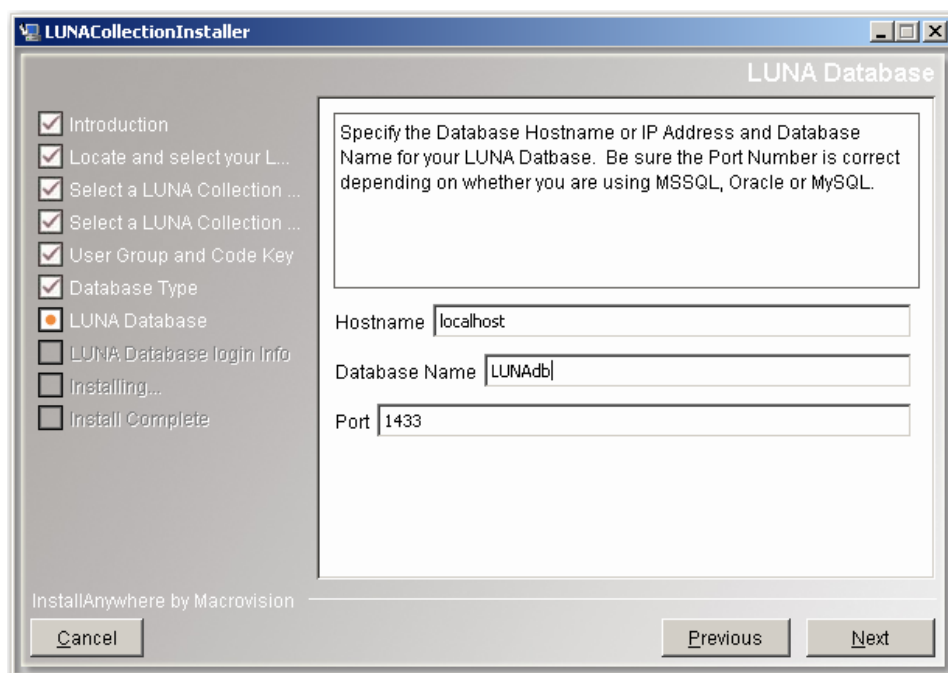


Choose the correct database platform for your LUNA collection.



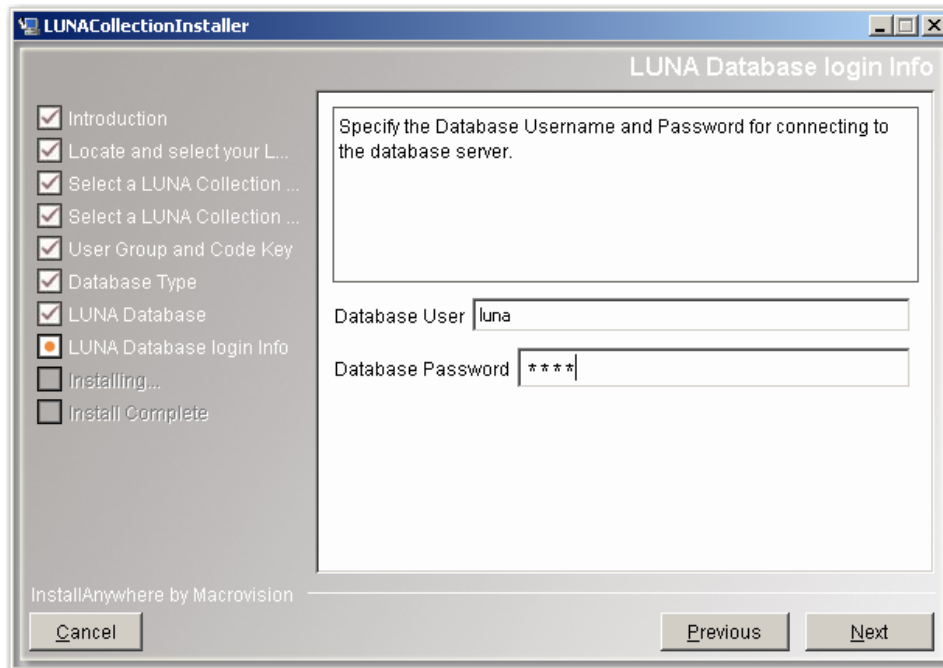
LUNA Database Information

Provide the information necessary to connect to your database, including the hostname, database name (SID Name if you're using Oracle), and database port. The installer will offer default values based on information provided earlier. Review the defaults (and change them as needed).

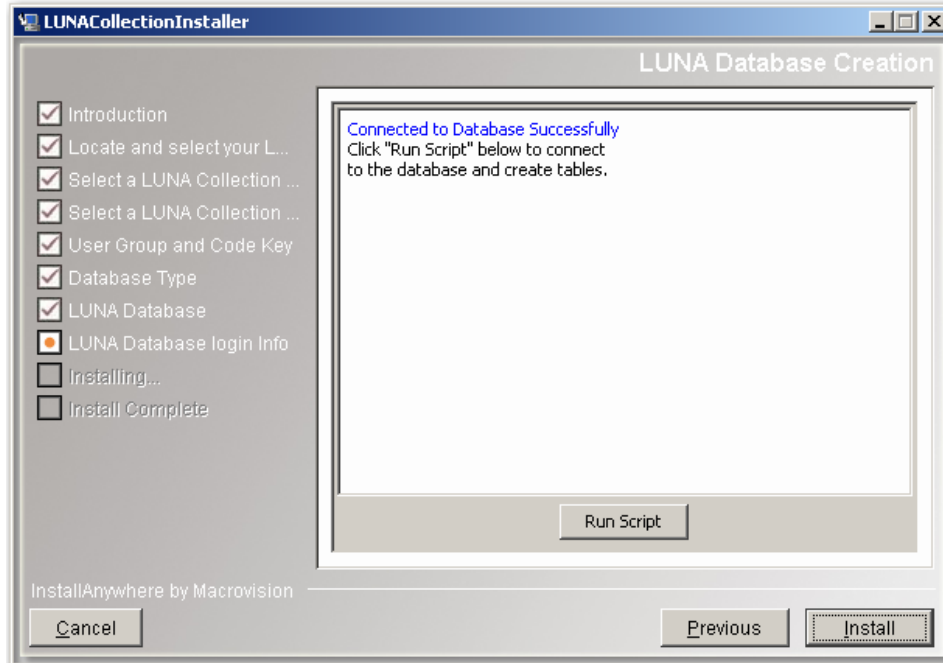


Database Username and Password

Please specify the username and password for your database. This is the username and password that LUNA should use to connect to the database.



Once the installer has tested the connection, choose the Run script button to finish inserting the LUNA subscription collection's information into the database.



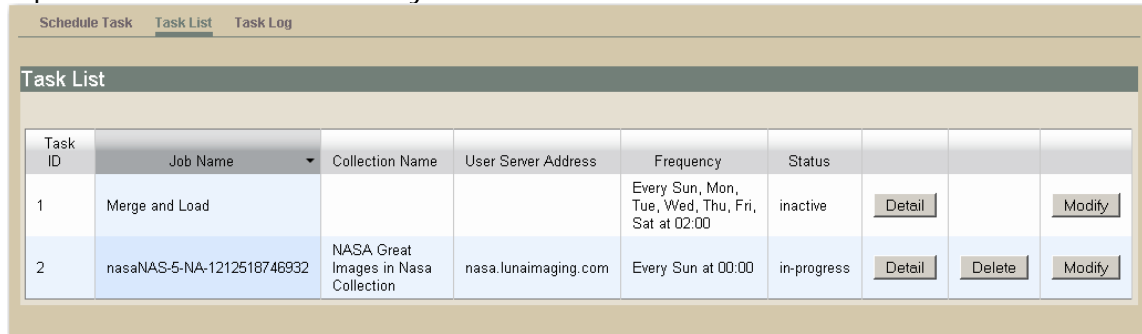
Next, Run the Installer which will place the LUNA index into the collection_indexes folder.

Running the Merge and Load tool

To make your new subscription collection available in LUNA, you need to run the Merge and Load task in the LUNA Publisher.

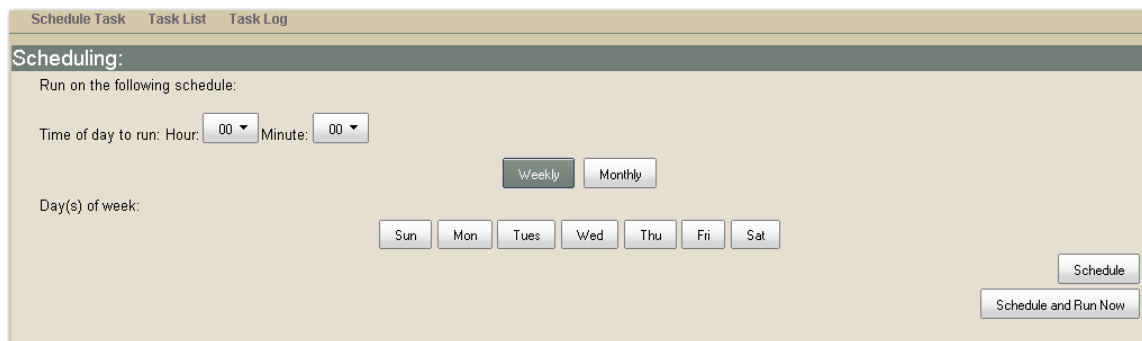
To access the Merge and Load task, you will need to launch Insight Studio and login to any collection you have access to. Once in Studio, launch the LUNA Publisher then select the Tasks Lists link located at the top left of the LUNA Publisher.

In the LUNA Publisher task list, locate the Merge and Load task. This will be the one at the top of the List. Click the Modify button.



Task ID	Job Name	Collection Name	User Server Address	Frequency	Status			
1	Merge and Load			Every Sun, Mon, Tue, Wed, Thu, Fri, Sat at 02:00	inactive	Detail		Modify
2	nasaNAS-5-NA-1212518746932	NASA Great Images in Nasa Collection	nasa.lunaimaging.com	Every Sun at 00:00	in-progress	Detail	Delete	Modify

Choose Schedule and Run Now.



Schedule Task Task List Task Log

Scheduling:

Run on the following schedule:

Time of day to run: Hour: 00 Minute: 00

Day(s) of week:

Sun Mon Tues Wed Thu Fri Sat

Congratulations,

Your subscription collection should now be available in LUNA

NOTE: To make this collection available to your users, use the same method that you used to make your other institutional collections available